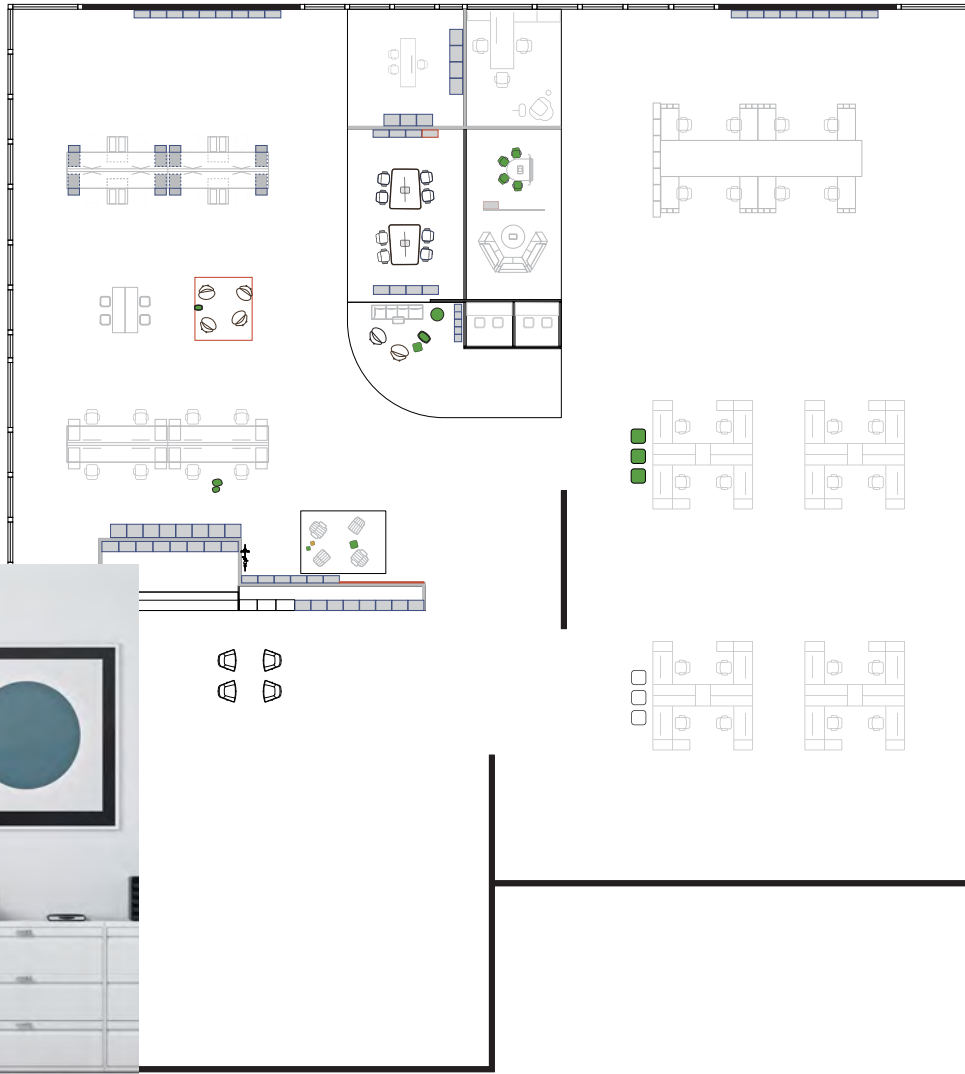
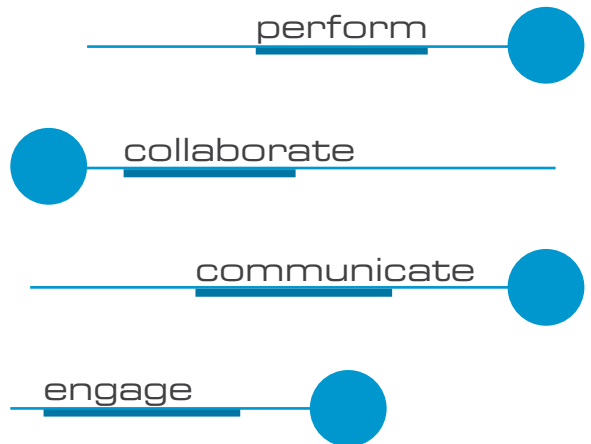


Product Catalog





Our simple to use and manage lock solutions modernize the workspace to provide improved flexibility, communication and collaboration.







keypad features

- Keypad operation
- Dual functionality - shared or assigned use
- All metal housing
- Slim 5/16" (8mm) profile
- Non-handed
- Standard or vertical body style
- With or without pull handle
- Brushed nickel or black finish
- 1/2" (12mm) motorized deadbolt or deadlatch
- Visual & audible indicators
- Manage with electronic keys or mobile device
- Customizable auto unlock
- Audit trail
- IP55 rated
- CE, IC, & FCC certified
- ADA compliant
- 3-5 year battery life
- Powered by premium AA batteries
- 2 year warranty

Aspire Keypad locks operate with an alphanumeric keypad interface. The interface also contains a key slot to operate locks with an ADA compliant User Key.



access credential

Users operate with either a self-selected 4-7-digit User Code or an ADA compliant User Key.

body style

Available in standard and vertical body styles with or without pull handle.

functionality

shared use

In shared use functionality, the user chooses an available storage unit and operates it with a self-selected access credential (code or key). Once the storage unit is vacated, it becomes available for a different user.

assigned use

In assigned use functionality, users are assigned access to a single or multiple storage units. Each lock can be programmed to operate with a single or multiple assigned access credentials.

locking mechanism

deadbolt

Features a 1/2" (12mm) motorized deadbolt designed for either shared or assigned use functionality.

deadlatch

Features a 1/2" (12mm) motorized deadlatch designed for assigned use functionality.





finish

Standard finishes are brushed nickel or black. Custom finishes are available upon request.

mounting

All Aspire Keypad locks are surface mounted. The keypad interface connects to the locking mechanism via a snap lock cable connector that tucks neatly into an integrated cable pocket. The mounting design accommodates a door thickness of up to 2" (50.8mm).

management

Programming and management access are accomplished via patented electronic keys. An optional mobile application offers simplified programming, customizable features, data analytics, and audit trail.

umeris[®]
by Digilock[®]





Touch RFID features

- Dual functionality - shared or assigned use
- All metal housing
- Slim 5/16" (8mm) profile
- Non-handed
- Standard or vertical body style
- With or without pull handle
- Brushed nickel or black finish
- 1/2" (12mm) motorized deadbolt or deadlatch
- Visual & audible indicators
- Manage with electronic keys or mobile device
- Customizable auto unlock
- Audit trail
- IP55 rated
- CE, IC, & FCC certified
- ADA compliant
- 3-5 year battery life
- Powered by premium AA batteries
- 2 year warranty

Aspire Touch RFID locks operate with a Touch RFID interface. The interface also contains a key slot to operate locks with an ADA compliant User Key.



access credential

Users operate with either an RFID credential or an ADA compliant User Key.

body style

Available in standard and vertical body styles with or without pull handle.

functionality

shared use

In shared use functionality, the user chooses an available storage unit and operates it with a self-selected access credential. Once the storage unit is vacated, it becomes available for a different user.

assigned use

In assigned use functionality, users are assigned access to a single or multiple storage units. Each lock can be programmed to operate with a single or multiple assigned access credentials.

locking mechanism

deadbolt

Features a 1/2" (12mm) motorized deadbolt designed for either shared or assigned use functionality.

deadlatch

Features a 1/2" (12mm) motorized deadlatch designed for assigned use functionality.





finish

Standard finishes are brushed nickel or black. Custom finishes are available upon request.

mounting

All Aspire Touch RFID locks are surface mounted. The keypad interface connects to the locking mechanism via a snap lock cable connector that tucks neatly into an integrated cable pocket. The mounting design accommodates a door thickness of up to 2" (50.8mm).

management

Programming and management access are accomplished via patented electronic keys. An optional mobile application offers simplified programming, customizable features, data analytics, and audit trail.

RFID credentials

Aspire Touch RFID locks work with multiple RFID standards operating at 13.56 MHz.

motorized

Numeris ensures that every storage compartment, regardless of shape or size, can be efficiently secured with reliable high-security deadbolt and deadlatch locking mechanisms.



deadbolt



deadlatch



What Changed?
 User experience became
 a much bigger part of
 ranking elements
 Earning links overbuilt
 into building, and is
 now impossible to create
 "good, unique" content
 The rise of content
 marketing created much
 more competition
 User expectations have
 risen as content creators
 went over backward to
 delight audiences

How do we create "10X" Content?

Costa Rica Eco Lodges

Top 10 Affordable Eco Lodges in Costa Rica
The Guardian > Travel > Costa Rica

The 10 Best Eco Lodges in Costa Rica
Rough Guides > Articles > 10 best

Costa Rica's Best Eco Lodges - Lonely Planet
Lonely Planet > Costa Rica > Hotels

Run an analysis of the content in the
top 10 (not possibly the most socially-shared too)

- Questions Answered
- Use of Visuals
- UX
- Quality of writing
- Detail and thoroughness
- Information/O Elements





keypad features

- Keypad operation
- Dual functionality - shared or assigned use
- All metal housing
- Surface or recess mount
- Multiple barrel lengths & cam options
- Non-handed
- Vertical or horizontal body style
- Brushed nickel or black finish
- Cam locking mechanism
- Visual & audible indicators
- Manage with electronic keys or mobile device
- Customizable Auto Unlock
- Audit trail
- IP55 rated
- CE, IC, & FCC certified
- ADA compliant
- 3-5 year battery life
- Powered by premium CR2032 or AAA batteries
- 2 year warranty

Versa Standard Keypad locks operate with an alphanumeric keypad interface. The interface also contains a key slot to operate locks with an ADA compliant User Key.



access credential

Users operate with either a self-selected 4-7-digit User Code or an ADA compliant User Key.

body style

Available in vertical and horizontal body styles with knob or ADA compliant lever.

functionality

shared use

In shared use functionality, the user chooses an available storage unit and operates it with a self-selected access credential (code or key). Once the storage unit is vacated, it becomes available for a different user.

assigned use

In assigned use functionality, users are assigned access to a single or multiple storage units. Each lock can be programmed to operate with a single or multiple assigned access credentials.

locking mechanism

cam

Features a cam that rotates 90° or 180° with the knob or ADA compliant lever. Custom cams are available upon request.

standard cam options

offset ■ flat ■ lifter ■ slam





finish

Standard finishes are brushed nickel or black. Custom finishes are available upon request.

mounting

All Versa Standard Keypad locks are surface or recess mounted.

management

Programming and management access are accomplished via patented electronic keys. An optional mobile application offers simplified programming, customizable features, data analytics, and audit trail.





Touch RFID features

- Dual functionality - shared or assigned use
- All metal housing
- Surface or recess mount
- Multiple barrel lengths & cam options
- Non-handed
- Vertical or horizontal body style
- Brushed nickel or black finish
- Cam locking mechanism
- Visual & audible indicators
- Manage with electronic keys or mobile device
- Customizable auto unlock
- Audit trail
- IP55 rated
- CE, IC, & FCC certified
- ADA compliant
- 3-5 year battery life
- Powered by premium AA batteries
- 2 year warranty

Versa Standard Touch RFID locks operate with a Touch RFID interface. The interface also contains a key slot to operate locks with an ADA compliant User Key.



access credential

Users operate with either an RFID credential or an ADA compliant User Key.

body style

Available in vertical and horizontal body styles with knob or ADA compliant lever.

functionality

shared use

In shared use functionality, the user chooses an available storage unit and operates it with a self-selected access credential. Once the storage unit is vacated, it becomes available for a different user.

assigned use

In assigned use functionality, users are assigned access to a single or multiple storage units. Each lock can be programmed to operate with a single or multiple assigned access credentials.

locking mechanism

cam

Features a cam that rotates 90° or 180° with the knob or ADA compliant lever. Custom cams are available upon request.

standard cam options

offset ■ flat ■ lifter ■ slam





finish

Standard finishes are brushed nickel or black. Custom finishes are available upon request.

mounting

All Versa Standard Touch RFID locks are surface or recess mounted.

management

Programming and management access are accomplished via patented electronic keys. An optional mobile application offers simplified programming, customizable features, data analytics, and audit trail.

RFID credentials

Versa Standard Touch RFID locks work with multiple RFID standards operating at 13.56 MHz.





keypad features

- Keypad operation
- Dual functionality - shared or assigned use
- All metal housing
- Surface or recess mount
- Multiple barrel lengths & cam options
- Non-handed
- Vertical or horizontal body style
- Brushed nickel or black finish
- Cam locking mechanism
- Visual & audible indicators
- Manage with electronic keys or mobile device
- Customizable auto unlock
- Audit trail
- IP55 rated
- CE, IC, & FCC certified
- ADA compliant
- 3-5 year battery life
- Powered by premium CR2032 or AAA batteries
- 2 year warranty

Versa Mini Keypad locks operate with an alphanumeric keypad interface. The interface also contains a key slot to operate locks with an ADA compliant User Key.



access credential

Users operate with either a self-selected 4-7-digit User Code or an ADA compliant User Key.

body style

Available in vertical and horizontal body styles with knob or ADA compliant lever.

functionality

shared use

In shared use functionality, the user chooses an available storage unit and operates it with a self-selected access credential (code or key). Once the storage unit is vacated, it becomes available for a different user.

assigned use

In assigned use functionality, users are assigned access to a single or multiple storage units. Each lock can be programmed to operate with a single or multiple assigned access credentials.

locking mechanism

cam

Features a cam that rotates 90° or 180° with the knob or ADA compliant lever. Custom cams are available upon request.

standard cam options

offset ■ flat ■ lifter ■ slam





finish

Standard finishes are brushed nickel or black. Custom finishes are available upon request.

mounting

All Versa Mini Keypad locks are surface or recess mounted.

management

Programming and management access are accomplished via patented electronic keys. An optional mobile application offers simplified programming, customizable features, data analytics, and audit trail.





Touch RFID features

- Dual functionality - shared or assigned use
- All metal housing
- Surface or recess mount
- Multiple barrel lengths & cam options
- Non-handed
- Vertical or horizontal body style
- Brushed nickel or black finish
- Cam locking mechanism
- Visual & audible indicators
- Manage with electronic keys or mobile device
- Customizable auto unlock
- Audit trail
- IP55 rated
- CE, IC, & FCC certified
- ADA compliant
- 3-5 year battery life
- Powered by premium AAA batteries
- 2 year warranty

Versa Mini Touch RFID locks operate with a Touch RFID interface. The interface also contains a key slot to operate locks with an ADA compliant User Key.



access credential

Users operate with either an RFID credential or an ADA compliant User Key.

body style

Available in vertical and horizontal body styles with knob or ADA compliant lever.

functionality

shared use

In shared use functionality, the user chooses an available storage unit and operates it with a self-selected access credential. Once the storage unit is vacated, it becomes available for a different user.

assigned use

In assigned use functionality, users are assigned access to a single or multiple storage units. Each lock can be programmed to operate with a single or multiple assigned access credentials.

locking mechanism

cam

Features a cam that rotates 90° or 180° with the knob or ADA compliant lever. Custom cams are available upon request.

standard cam options

offset ■ flat ■ lifter ■ slam





finish

Standard finishes are brushed nickel or black. Custom finishes are available upon request.

mounting

All Versa Mini Touch RFID locks are surface or recess mounted.

management

Programming and management access are accomplished via patented electronic keys. An optional mobile application offers simplified programming, customizable features, data analytics, and audit trail.

RFID credentials

Versa Mini Touch RFID locks work with multiple RFID standards operating at 13.56 MHz.





keypad features

- Keypad operation
- Dual functionality - shared or assigned use
- All metal housing
- Surface or recess mount
- Multiple barrel lengths & cam options
- Non-handed
- Vertical or horizontal body style
- Brushed nickel or black finish
- Cam locking mechanism
- Visual & audible indicators
- Manage with electronic keys or mobile device
- Customizable auto unlock
- Audit trail
- IP55 rated
- CE, IC, & FCC certified
- ADA compliant
- 3-5 year battery life
- Powered by premium CR2450 or AAA batteries
- 2 year warranty

Versa Plus Keypad locks operate with an alphanumeric keypad interface. The interface also contains a key slot to operate locks with an ADA compliant User Key.



access credential

Users operate with either a self-selected 4-7-digit User Code or an ADA compliant User Key.

body style

Available in vertical and horizontal body styles with knob or ADA compliant lever.



functionality

shared use

In shared use functionality, the user chooses an available storage unit and operates it with a self-selected access credential (code or key). Once the storage unit is vacated, it becomes available for a different user.

assigned use

In assigned use functionality, users are assigned access to a single or multiple storage units. Each lock can be programmed to operate with a single or multiple assigned access credentials.

locking mechanism

cam

Features a cam that rotates 90° or 180° with the knob or ADA compliant lever. Custom cams are available upon request.

standard cam options

offset ■ flat ■ lifter ■ slam



finish

Standard finishes are brushed nickel or black. Custom finishes are available upon request.

mounting

All Versa Plus Keypad locks are surface or recess mounted.

management

Programming and management access are accomplished via patented electronic keys. An optional mobile application offers simplified programming, customizable features, data analytics, and audit trail.





Touch RFID features

- Dual functionality - shared or assigned use
- All metal housing
- Surface or recess mount
- Multiple barrel lengths & cam options
- Non-handed
- Vertical or horizontal body style
- Brushed nickel or black finish
- Cam locking mechanism
- Visual & audible indicators
- Manage with electronic keys or mobile device
- Customizable auto unlock
- Audit trail
- IP55 rated
- CE, IC, & FCC certified
- ADA compliant
- 3-5 year battery life
- Powered by premium AA batteries
- 2 year warranty

Versa Plus Touch RFID locks operate with a Touch RFID interface. The interface also contains a key slot to operate locks with an ADA compliant User Key.



access credential

Users operate with either an RFID credential or an ADA compliant User Key.

body style

Available in vertical and horizontal body styles with knob or ADA compliant lever.



functionality

shared use

In shared use functionality, the user chooses an available storage unit and operates it with a self-selected access credential. Once the storage unit is vacated, it becomes available for a different user.

assigned use

In assigned use functionality, users are assigned access to a single or multiple storage units. Each lock can be programmed to operate with a single or multiple assigned access credentials.

locking mechanism

cam

Features a cam that rotates 90° or 180° with the knob or ADA compliant lever. Custom cams are available upon request.

standard cam options

offset ■ flat ■ lifter ■ slam



finish

Standard finishes are brushed nickel or black. Custom finishes are available upon request.

mounting

All Versa Plus Touch RFID locks are surface or recess mounted.

management

Programming and management access are accomplished via patented electronic keys. An optional mobile application offers simplified programming, customizable features, data analytics, and audit trail.

RFID credentials

Versa Plus Touch RFID locks work with multiple RFID standards operating at 13.56 MHz.





keypad features

- Keypad operation
- Dual functionality - shared or assigned use
- All metal housing
- Inside or recess mount
- Multiple barrel lengths & cam options
- Non-handed
- Vertical or horizontal body style
- Brushed nickel or black finish
- Cam locking mechanism
- Visual & audible indicators
- Manage with electronic keys or mobile device
- Customizable auto unlock
- Audit trail
- IP55 rated
- CE, IC, & FCC certified
- 3-5 year battery life
- Powered by premium AA batteries
- 2 year warranty

Versa Small Profile keypad locks operate with an alphanumeric keypad interface. The interface also contains a key slot to operate locks with a User Key.



access credential

Users operate with either a self-selected 4-7-digit User Code or User Key.

body style

Available in vertical and horizontal body styles.

functionality

shared use

In shared use functionality, the user chooses an available storage unit and operates it with a self-selected access credential (code or key). Once the storage unit is vacated, it becomes available for a different user.

assigned use

In assigned use functionality, users are assigned access to a single or multiple storage units. Each lock can be programmed to operate with a single or multiple assigned access credentials.

locking mechanism

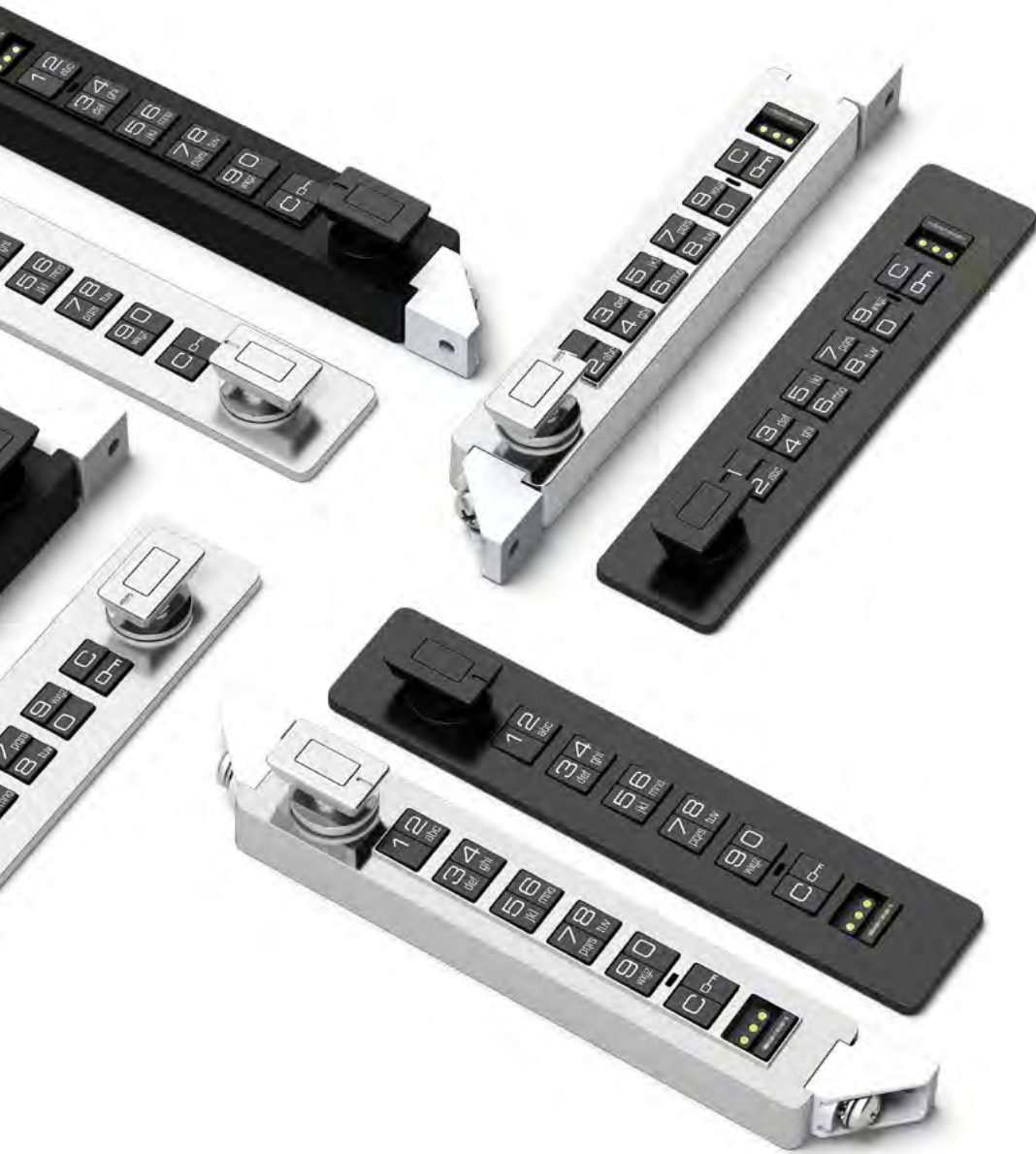
cam

Features a cam that rotates 90° or 180°. Custom cams are available upon request.

standard cam options

offset ■ flat ■ lifter ■ slam





finish

Standard finishes are brushed nickel or black. Custom finishes are available upon request.

mounting

All Versa Small Profile keypad locks are inside or recess mounted.

management

Programming and management access are accomplished via patented electronic keys. An optional mobile application offers simplified programming, customizable features, data analytics, and audit trail.





RFID features

- Dual functionality - shared or assigned use
- All metal housing
- Inside or recess mount
- Multiple barrel lengths & cam options
- Non-handed
- Vertical or horizontal body style
- Brushed nickel or black finish
- Cam locking mechanism
- Visual & audible indicators
- Manage with electronic keys or mobile device
- Customizable auto unlock
- Audit trail
- IP55 rated
- CE, IC, & FCC certified
- 3-5 year battery life
- Powered by premium AA batteries
- 2 year warranty

Versa Small Profile RFID locks operate with an RFID interface. The interface also contains a key slot to operate locks with a User Key.



access credential

Users operate with either an RFID credential or User Key.

body style

Available in vertical and horizontal body styles.

functionality

shared use

In shared use functionality, the user chooses an available storage unit and operates it with a self-selected access credential. Once the storage unit is vacated, it becomes available for a different user.

assigned use

In assigned use functionality, users are assigned access to a single or multiple storage units. Each lock can be programmed to operate with a single or multiple assigned access credentials.

locking mechanism

cam

Features a cam that rotates 90° or 180°. Custom cams are available upon request.

standard cam options

offset ■ flat ■ lifter ■ slam





finish

Standard finishes are brushed nickel or black. Custom finishes are available upon request.

mounting

All Versa Small Profile keypad locks are inside or recess mounted.

management

Programming and management access are accomplished via patented electronic keys. An optional mobile application offers simplified programming, customizable features, data analytics, and audit trail.

RFID credentials

Versa Small Profile RFID locks work with multiple RFID standards operating at 13.56 MHz.

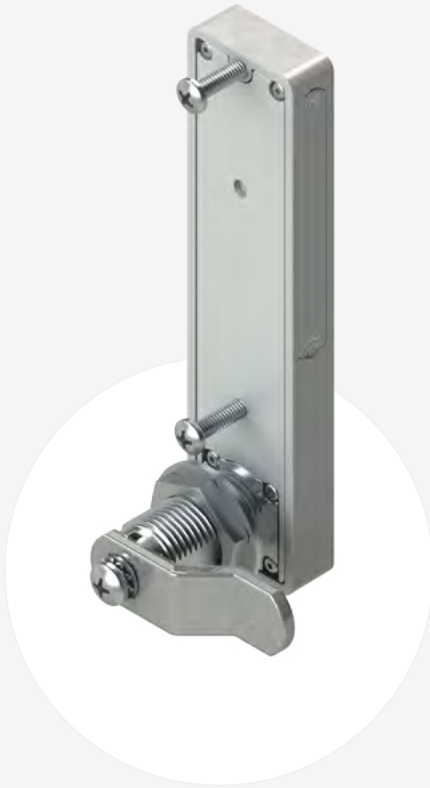
cam

Versa by Digilock[®] features a slam, offset, flat, and lifter cam that rotates with the knob or ADA compliant lever. Standard barrel lengths include 16mm, 22mm, 30mm, and 30mm.

Custom cams and barrel solutions are available upon request.



slam latch



offset cam



flat cam



lifter cam

Versa by Digilock[®] features a standard knob or ADA compliant lever.
Custom knob and lever solutions are available upon request.

plus

standard knob



ADA lever

standard



standard knob



ADA lever

mini



standard knob



ADA lever

key management

Numeris® by Digilock® patented electronic keys offer external power, audit, and override capabilities for a credible management system that significantly enhances productivity and reduces cost.





user key

An ADA compliant option for user access.



manager key

Multiple Manager Keys may be programmed to operate each lock.



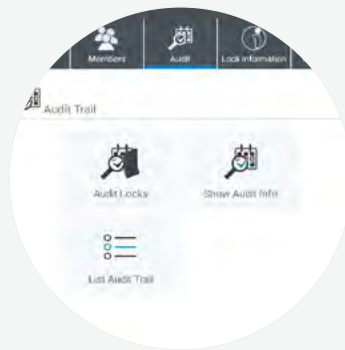
programming key

1 Programming Key allowed per lock group.

	User Key	Manager Key	Programming Key
Operates the lock	•	•	•
Overrides user access		•	•
Allows management inspection		•	•
Provides external power		•	•
Registers Manager Keys			•
Assigns user credential		•	
Sets lock functionality (on select models)			•

Numeris locks have an option to program and manage the locks through a mobile device. The mobile application offers simplified programming, customizable features, data analytics, and audit trail.





program

Provide management access and easily maintain management credentials.

audit

Report on when and who operated a lock.

auto unlock

Set locks to automatically unlock at a specific time or after a specified number of hours.

battery status

Visual indicator of lock's power level.

Contact Us

Digilock Corporate Headquarters

9 Willowbrook Court
Petaluma, CA 94954
United States of America



Hans Schourup A/S

Sletvej 2D
8310 Tranbjerg
+45 86146244
info@hans-schourup.dk
